



High-torque AC synchronous servo motor EM3L-30 is specially designed to provide low speed motion with increased force at the motor shaft. The motor is supplied with high resolution 23-bit optical or 17-bit magnetic absolute encoder. Optional 24VDC brake is available.

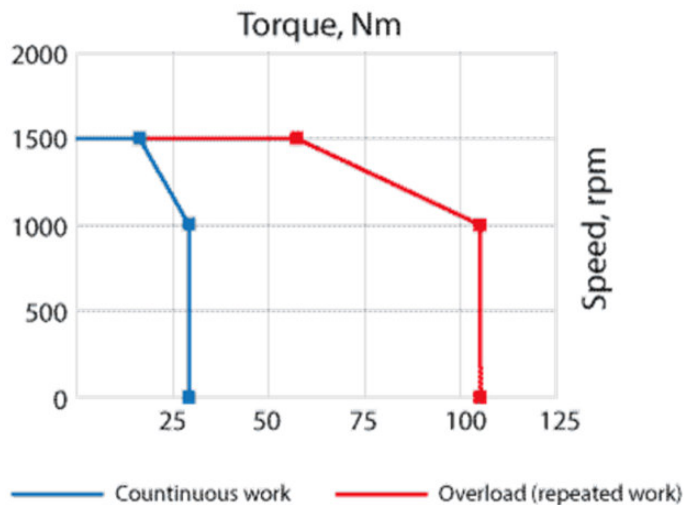
## Technical data

Output power	3000 W
Rated speed	1000 rpm
Maximum speed	1500 rpm
Rated torque	28.7 Nm
Maximum torque	105 Nm
Rated current	8.6 A
Maximum current	34.7 A
Motor inertia (motor without brake)	85.5 kg*cm <sup>2</sup>

## Technical data

Motor inertia (motor with brake)	91.5 kg*cm <sup>2</sup>
Allowable radial shaft load	1764 N
Allowable axial shaft load	588 N
Optional brake holding torque	≥72 Nm
Optional brake voltage	24 VDC
Weight (motor without brake)	23.2 kg
Weight (motor with brake)	27.8 kg
Flange	180 mm

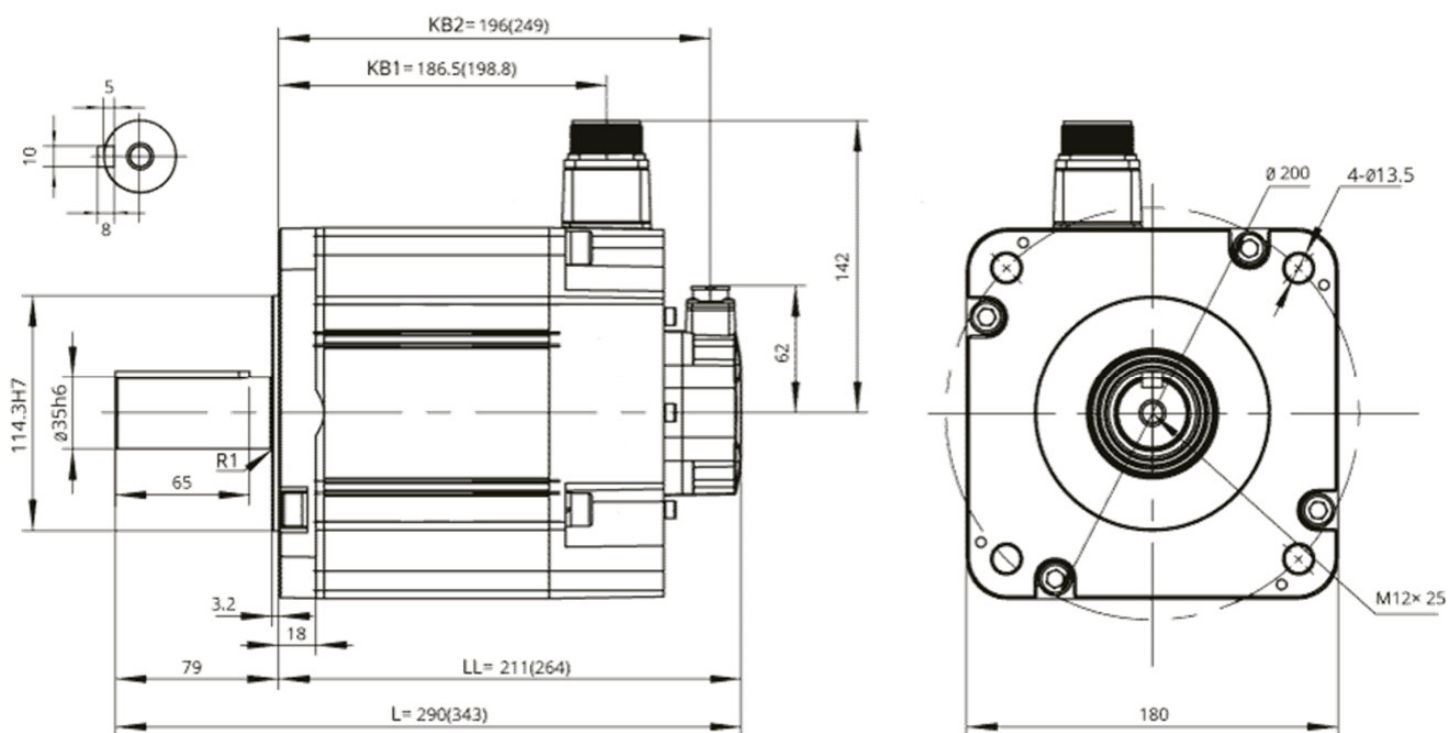
## Speed-torque curves



## Available motor models

Motor model	Encoder	Brake	Servo drive	Input drive supply voltage
EM3L-30DLA224	absolute optic encoder, resolution 23-bit (8 388 608 ppr)	-	ED3L-30DMA ED3L-30DEA ED3L-30DPA	Three phase AC 380V...440V
EM3L-30DLA244		✓		
EM3L-30DTA224	absolute magnetic encoder, resolution 17-bit (131 072 ppr)	-		
EM3L-30DTA244		✓		

## Dimensions of AC servo motor EM3L-30



Note: The values in parentheses represent the values of motors with brakes

