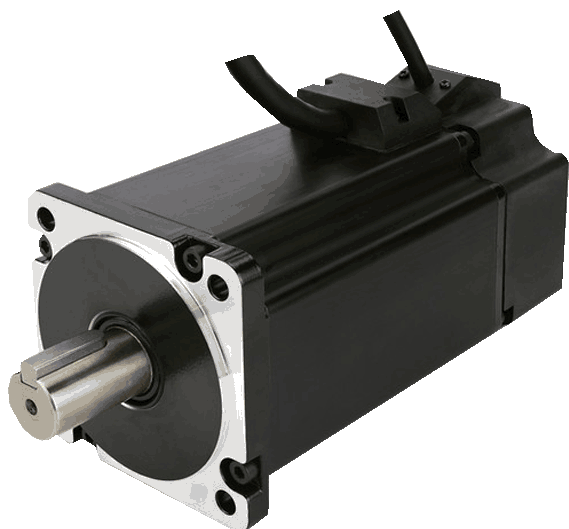


# APBA80L048030-E

## BRUSHLESS DC MOTOR WITH IP65 WITH ENCODER



With their rated power of 1,000 W, the high-performance BLDC motor APBA80L048030-E not only matches the power of AC servo motors with 80 mm flange but are also mechanically compatible. It is rated IP65 and comes standard with an integrated encoder. The incremental encoder resolution is 2,500 CPR (10,000 PPR).

Standard model is with keyway. Custom windings and shaft modifications are available on request.

This motor is especially suited for battery-powered applications, such as AGVs or service robots, because of its low voltage it is also safe for use in medical or other environments where standard AC servos would require additional insulation and safety measures.

### Technical parameters

Flange	80 mm	Weight	3.2 kg
Size	NEMA 32	Rated voltage	48 V
Rated power	1000 W	Peak torque	960 Ncm
Rated current	30 A	Encoder resolution	2500 CPR
IP-Protection motor	IP65	Rated speed	3000 rpm
Rotor inertia	170 gcm <sup>2</sup>	Line to line resistance	0.043 Ohm
Line to line inductance	0.21 mH	Length	162 mm
Rated torque	320 Ncm	Encoder	yes
Torque constant	10.7 Ncm/A	Operating voltage	5 V
Encoder type	incremental	Shaft	keyway with key

### Dimensions

