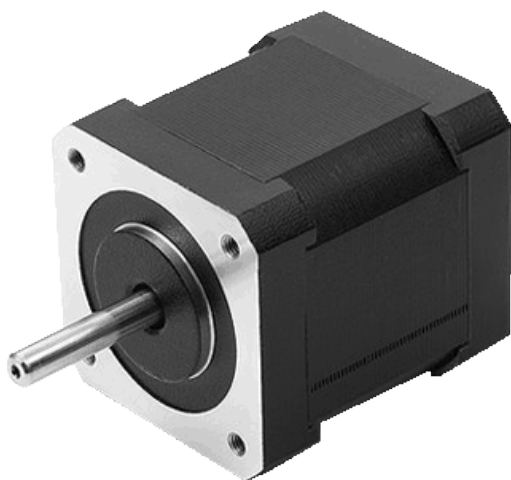


DB42C02

BRUSHLESS DC MOTOR



BLDC motor with quiet running characteristics, high acceleration rates, a long service life and speeds of up to 1400 rpm. By mounting an encoder, this motor can be expanded into a high-performance servo motor for high speed ranges. For higher torques and a wider performance range we offer planetary gearboxes.

If use DB42C02 series with a gearbox, the motor speed must not exceed the maximum input speed of the gearbox.

Technical parameters

| | | | |
|-------------------------|---------------------|-------------------------|-----------|
| Flange | 42 mm | Weight | 0.75 kg |
| Size | NEMA 17 | Rated voltage | 48 V |
| Rated power | 147 W | Peak torque | 30 Ncm |
| Rated current | 3.57 A | Peak current | 10.71 A |
| Rated speed | 14000 rpm | Torque constant | 2.8 Ncm/A |
| Rotor inertia | 89 gcm ² | Line to line resistance | 0.2 Ohm |
| Line to line inductance | 0.32 mH | Length | 100 mm |

Dimensions

