



DC brushless motors

DC brushless motors are 3-phase electromotors with Hall sensors.

We offer power range up to 660W output.

The main advantage of brushless DC motors is an absence of brushes and rubbing parts. Brushless motors are low noise, effective, low cost and long life.

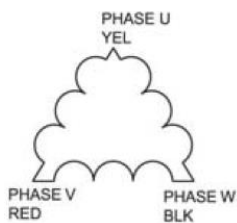
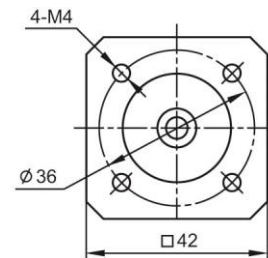
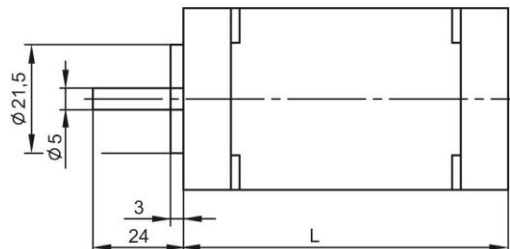


Brushless motor	Power, W	Speed, rpm	Rated torque, kgf*cm	Max. torque, kgf*cm	Voltage VDC	Max. Current, Amp	Rotor inertia, g*cm ²	Resistance*, Ohm	Inductance*, mH	Torque const, N*m/A	Poles number	Back EMF, V/rpm*10 ³
SM42L61	52	4000	1,3	3,8	24	10,6	48	0,8	1,2	0,036	8	3,7
SM42L100	105		2,5	7,5		20	96	0,3	0,5			3,9
	138		3,3	10	36	16,5	173	0,45	1,5	0,063	4	4,8
SM57L114	184		4,4	12,7		20,5	230	0,3	1,0			6,6
SM86L98	440	3000	14,0	42,0	48	37	1600	0,2	0,5	0,113	8	9,2
SM86L125	660		21,0	63,0		56	2400	0,1	0,3			0,112

* line-to-line

Brushless motor SM42L61

SM42L61 Length L=61mm,
SM42L100 Length L=100mm



Lead color	Lead Gauge	Function	Description
RED	UL1007 26AWG	Vcc	Supply voltage for Hall sensors
BLUE		Hall A	
GREEN		Hall B	Hall sensors
WHITE		Hall C	
BLACK	UL1007 20AWG	GND	Ground for Hall sensors
YELLOW		PHASE A	Motor phases
RED		PHASE B	
BLACK	PHASE C		

Smart Motor Devices OÜ

Address: Akadeemia tee 21/6, 12618, Tallinn, Estonia

Tel.: +372 6559914

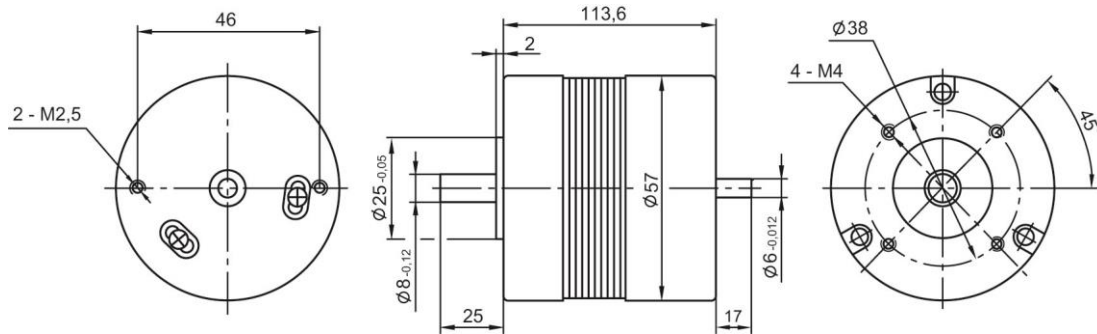
E-mail: sales@smd.ee

Web: www.smd.ee

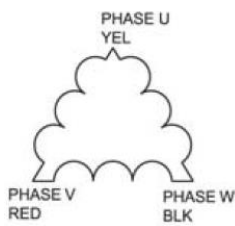




Brushless motor SM57L114

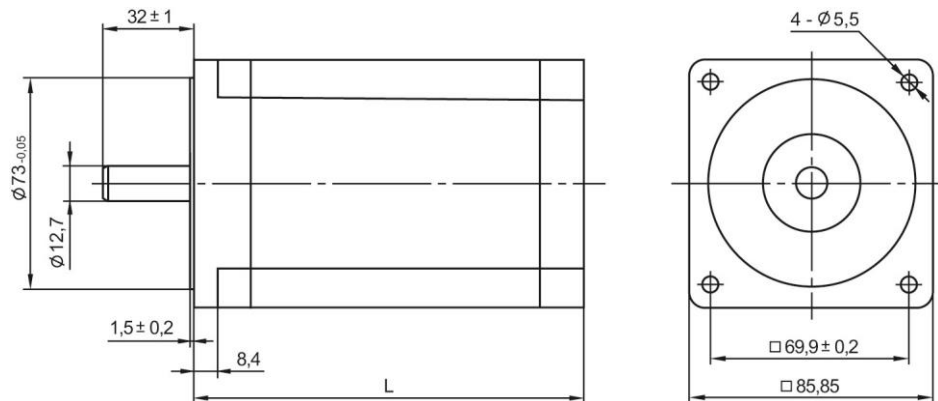


SM57L114 Length A=115mm

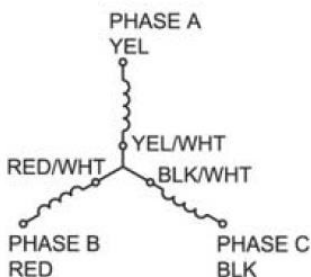


Lead color	Lead Gauge	Function	Description
RED	UL1007 26AWG	Vcc	Supply voltage for Hall sensors
BLUE		Hall A	Hall sensors
GREEN		Hall B	
WHITE		Hall C	
BLACK		GND	Ground for Hall sensors
YELLOW	UL1007 20AWG	PHASE A	Motor phases
RED		PHASE B	
BLACK		PHASE C	

Brushless motor SM86L



SM86L98 Length L=96mm,
SM86L125 Length L=123mm



Lead Color	Lead Gauge	Function	Description
RED	UL1007 26AWG	Vcc	Supply voltage for Hall sensors
BLUE		Hall A	Hall sensors
GREEN		Hall B	
WHITE		Hall C	
BLACK		GND	Ground for Hall sensors
Yellow & Yel/White	UL3266 AWG20#	Phase U	Motor phases
Red & Red/White		Phase V	
Black & Black/White		Phase W	

Smart Motor Devices OÜ

Address: Akadeemia tee 21/6, 12618, Tallinn, Estonia
Tel.: +372 6559914
E-mail: sales@smd.ee
Web: www.smd.ee

