

The low-play planetary gearboxes for NEMA 23 (56 mm), NEMA 24 (60 mm) and NEMA 34 (86 mm) motors provide high running torques, high torsional stiffness, low circumferential backlash, high admissible axial and radial shaft loads and low running noise.

**Note:** The spacer sleeve MK-DH-8-11 must also be ordered if this gearbox will be attached to motors with an 8 mm shaft.

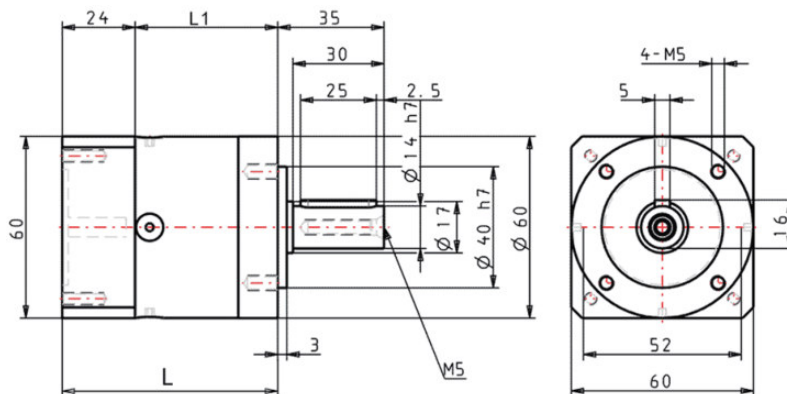
## Technical data

Suitable for motor sizes	NEMA 23 (56 mm), NEMA 24 (60 mm) and NEMA 34 (86 mm)
Rated output torque	15 - 44 Nm
Max. backlash	10' - 15' (arc. Minutes)
Efficiency	51 - 98 %
Possible reduction ratios	3 - 512

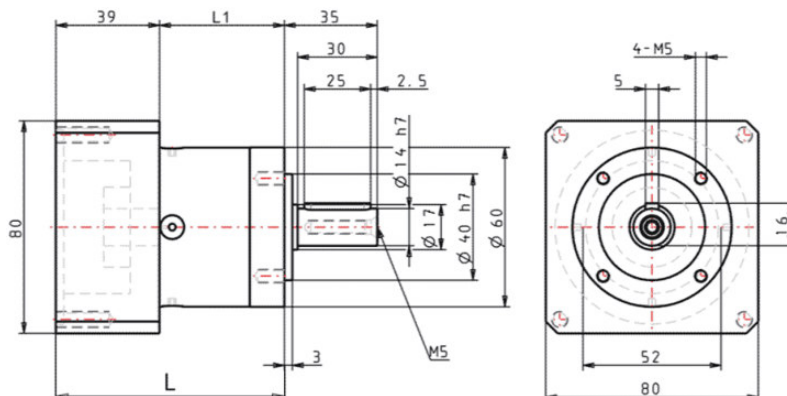
## Technical data

Max. input speed	13000 rpm
IP protection	IP54
Admissible radial shaft Load	340 N
Admissible axial shaft Load	450 N
Operating temperature	-25 to +90 °C

## Dimensions of precision planetary gearbox GPLE60 for NEMA 23 and NEMA 24



## Dimensions of precision planetary gearbox GPLE60 for NEMA 34



## Technical data of precision planetary gearbox GPLE60

Reduction ratio	Rated output torque, Nm	Max. output torque, Nm	Efficiency, %	Max. backlash, arc minutes	Moment of inertia, kg*mm <sup>2</sup>	Length L1, mm	Length L, mm		Weight, kg
							NEMA17	NEMA23 NEMA24	
3	28	45	98	10	13.5	47	71	86	0.9
4	38	61	98		9.3				
5	40	64	98		7.8				
8	18	29	97		6.5				
10	15	24	96		6.5				
9	44	70	97	12	13.1	59.5	83.5	98.5	1.1
12	44	70	96		12.7				
15	44	70	96		7.7				
16	44	70	96		8.8				
20	44	70	96		7.5				
25	40	64	95		7.5				
32	44	70	95		6.4				
40	40	64	94		6.4				
64	18	29	87	6.4					
60	44	70	92	15	7.6	72	96	111	1.3
80	44	70	91		7.5				
100	44	70	89		7.5				
120	44	70	88		6.4				
160	44	70	86		6.4				
200	40	64	83		6.4				

