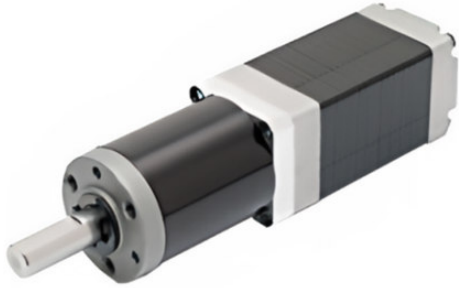


GPLL22 gearboxes are intended for little stepper motor sizes NEMA 8 (flange 20 mm) and NEMA 11 (flange 28 mm). The model is made of metal and provides rated torque up to 0.4 Nm. These planetary gearboxes are an economic alternative to precision planetary gearboxes.



Please note, the GPLL22 gearboxes can only be ordered with a motor.

Technical data

Suitable for motor sizes	NEMA 8 (20 mm), NEMA 8 (20 mm)
Rated output torque	0.2 – 0.4 Nm
Max. backlash	150' (arc. Minutes)
Efficiency	60 – 80 %
Possible reduction ratios	5, 25, 90
Max. input speed	9000 rpm
Admissible radial shaft Load	7 N
Admissible axial shaft Load	10 N
Operating temperature	-10 to +80 °C

Reduction ratio	Rated output torque, Nm	Max. output torque, Nm	Efficiency, %	Length L1, mm	Length L, mm	Weight, kg
5	0.2	0.6	80	21.8	26.8	0.046
25	0.3	0.9	70	28.0	33	0.051
90	0.4	1.2	60	34.2	39.2	0.058

Dimensions of precision planetary gearbox GPLL22

