

SMSD-8.0LAN

STEP MOTOR CONTROLLER



SMSD-8.0LAN is a step motor controller with advanced functionality. It is designed by our engineers for medium size stepper motors. The controller is designed for an Ethernet connection and can be remotely controlled using a local network. USB connection is also provided.

The controller operates as a standalone device according to a pre-programmed algorithm or as a slave with an external master device.

The controller has inputs for a brake resistor connecting.

Technical parameters

Max. current per phase	1.0 – 8.0 A
Supply voltage	24 – 48 VDC
Microstepping	1/1, 1/2, 1/4, 1/8, 1/16 (1/32, 1/64, 1/128 – for some motor models)
Communication interfaces	Ethernet, USB

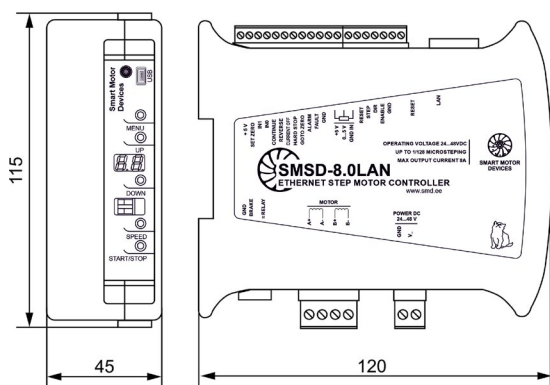
Inputs for external discrete signals

- IN1 and IN2 – programmable inputs
- HARD STOP – emergency stop signal
- SET_ZERO and GOTO ZERO – inputs for homing procedure
- CURRENT OFF, CONTINUE, REVERSE – additional inputs for advanced functions

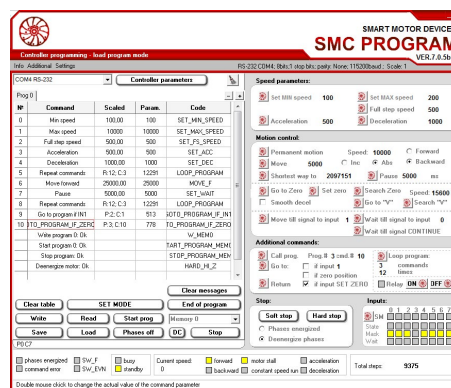
Operation modes

- Program control – motion according to a user program
- Direct control mode – real-time executing of commands from a master device
- Analog speed control – 0...5 V built-in potentiometer
- Analog angle control – 0...5 V, external or built-in potentiometer
- STEP/DIR pulse position control

Dimensions



Software for the controller



Address: Tallinn Science Park Tehnopol,
Akadeemia tee 21/6, 12618, Tallinn, Estonia
Phone: +372 6559914
E-mail: sale@smd.ee



SMART MOTOR DEVICES
DRIVERS AND CONTROLLERS FOR ELECTROMOTORS