

SM4247 with SMD-1.6mini ver.2



STEPPER MOTOR WITH INTEGRATED CONTROLLER

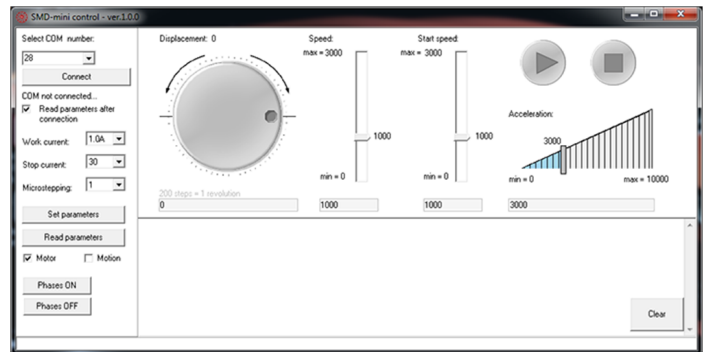
Stepper motor SM4247 with integrated microstepping controller SMD-1.6mini ver.2 is a ready to work assembled unit. The drive provides smooth running, high dynamics and precise positioning. The drive provides both STEP/DIR pulse position control and control by commands via RS-232.

Technical parameters

Voltage	12 - 24 VDC
Size	42 mm (NEMA 17)
Holding torque	4.4 kgf*cm
Control methods	STEP/DIR, RS-232
Microstepping	1/1...1/256

Software

- The drive provides configuring motor control parameters via RS-232. It is also possible to directly control the motor with commands from a PC or PLC.
- SMD-mini-control software is designated for quick parameterization of the drive, as well as for performing a given movement, setting speed and acceleration, starting and stopping the motor, turning on/off motor phases.



Dimensions

