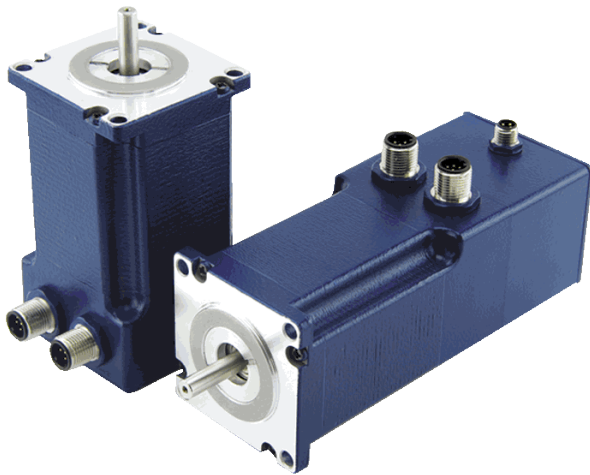


# AS5918L4204-E

## STEPPER MOTOR WITH IP65 WITH ENCODER



High-torque stepper motor with M12 connector with protection class IP65 (except shaft output) in size NEMA 23 (56 mm) and 1.8° step angle (full step). Identical flange size as the standard motor ST5918, therefore electrically and mechanically interchangeable.

Stepper motor AS5918L4204-E is designed for harsh operating environments and have high electromagnetic compatibility (EMC). It is supplied with integrated incremental encoder 500 CPR. Pre-assembled cables permit quick and error-free wiring and commissioning.

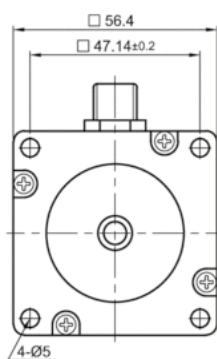
An extensive range of customized shaft and cable versions as well as custom-made products are available upon a request.

### Technical parameters

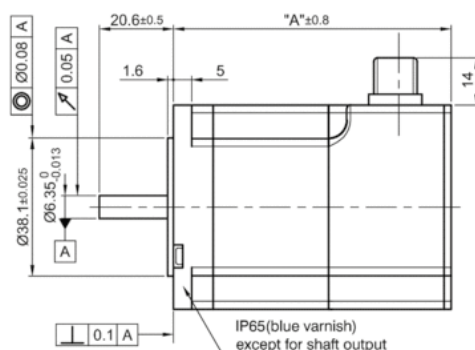
|                      |          |                     |                      |
|----------------------|----------|---------------------|----------------------|
| Flange               | 56 mm    | IP-protection motor | IP65                 |
| Size                 | NEMA 23  | Encoder type        | incremental          |
| Holding torque       | 187 Ncm  | Operating voltage   | 5 V                  |
| Current per phase    | 4.2 A    | Rotor inertia       | 480 gcm <sup>2</sup> |
| Length               | 98 mm    | Encoder             | YES                  |
| Resistance per phase | 0.58 Ohm | Encoder resolution  | 500 CPR              |
| Brake                | NO       | Weight              | 1.14 kg              |

### Dimensions

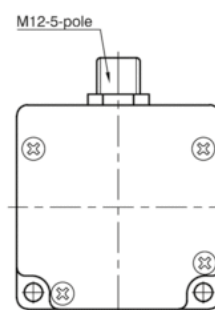
Front view and mounting



Side view



Rear view



Rear view with Encoder

