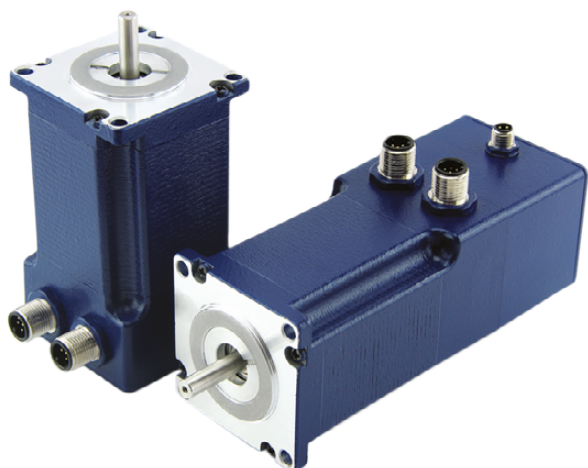


AS5918L4204-ENM24

STEPPER MOTOR WITH IP65 WITH ENCODER



High-torque stepper motor with M12 connector with protection class IP65 (except shaft output) in size NEMA 23 (56 mm) and 1.8° step angle (full step). Identical flange size as the standard motor ST5918, therefore electrically and mechanically interchangeable.

Stepper motor AS5918L4204-ENM24 is designed for harsh operating environments and have high electromagnetic compatibility (EMC). It is supplied with integrated incremental encoder 1024 CPR. Pre-assembled cables permit quick and error-free wiring and commissioning.

An extensive range of customized shaft and cable versions as well as custom-made products are available upon a request.

Technical parameters

Flange	56 mm	IP-protection motor	IP65
Size	NEMA 23	Encoder type	incremental
Holding torque	187 Ncm	Operating voltage	24 V
Current per phase	4.2 A	Rotor inertia	480 gcm ²
Length	98 mm	Encoder	YES
Resistance per phase	0.58 Ohm	Encoder resolution	1024 CPR
Brake	NO	Weight	1.14 kg

Dimensions

