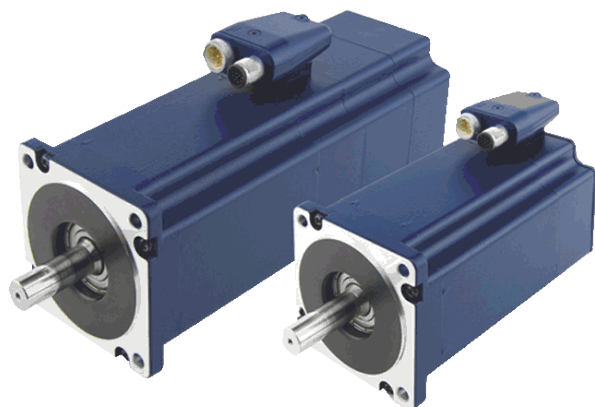


AS8918L9504-E24

STEPPER MOTOR WITH IP65 WITH ENCODER



High-torque stepper motor with M12 connector with protection class IP65 (except shaft output) in size NEMA 34 (86 mm) and 1.8° step angle (full step). Identical flange size as the standard motor ST8918, therefore electrically and mechanically interchangeable.

Stepper motor AS8918L9504-E24 is designed for harsh operating environments and have high electromagnetic compatibility (EMC). It is supplied with integrated incremental encoder 500 CPR. Pre-assembled cables permit quick and error-free wiring and commissioning.

An extensive range of customized shaft and cable versions as well as custom-made products are available upon a request.

Technical parameters

Flange	86 mm	IP-Protection motor	IP65
Size	NEMA 34	Encoder type	incremental
Holding torque	933 Ncm	Operating voltage	24 V
Current per phase	9.5 A	Rotor inertia	3000 gcm ²
Length	148 mm	Encoder	YES
Resistance per phase	0.26 Ohm	Encoder resolution	4000 CPR
Inductance per phase	2.7 mH	Weight	4.35 kg

Dimensions

