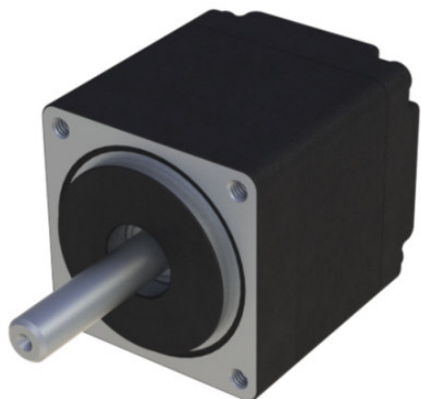


FL28STH32-0956A

STEPPER MOTOR

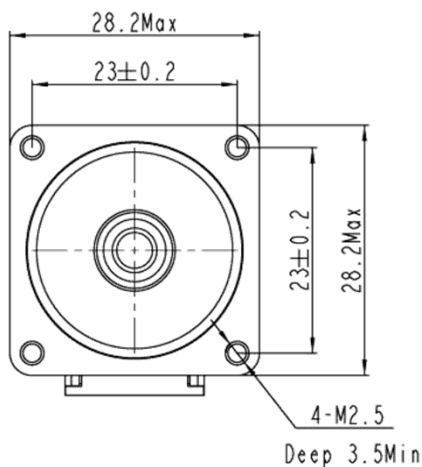
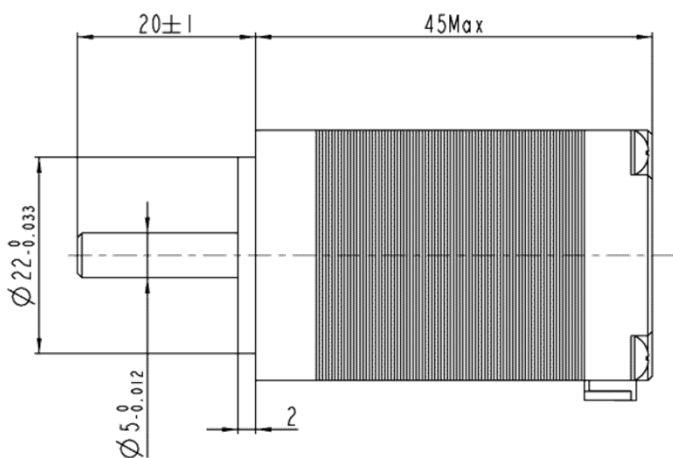


The FL28STH32-0956A NEMA11 hybrid stepper motor is a popular model of small-sized electric motors. Despite its miniature size, this engine has good performance characteristics, demonstrating high smooth operation with low inertia and high torque on the output shaft.

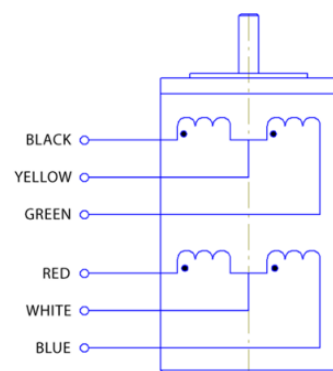
Technical parameters

Holding Torque	Step angle	Step angle accuracy	Phase current	Phase resistance	Phase inductance	Number of phases / leads	Rotor inertia	Weight
0,43 kg*cm	1,8 deg	±5%	0,95 A	2,8 Ohm	1 mH	2 / 6	0,9 g*cm ²	0,11 Kg

Dimensions



Wiring diagram



Address: Tallinn Science Park Tehnopol,
Akadeemia tee 21/6, 12618, Tallinn, Estonia
Phone: +372 6559914
E-mail: sale@smd.ee



SMART MOTOR DEVICES

DRIVERS AND CONTROLLERS FOR ELECTROMOTORS