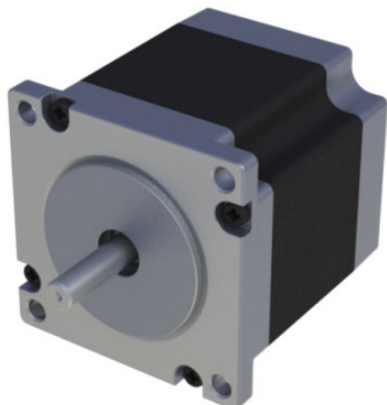


# FL57STH76-2804A

# STEPPER MOTOR



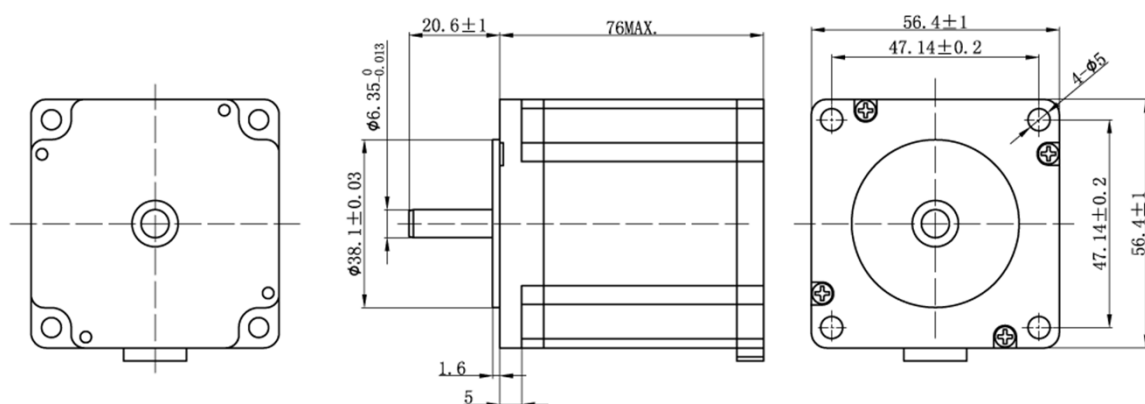
The stepper motors FL57STH76-2804A, which belong to the Nema23 size category, have gained popularity for their versatility and are widely considered an excellent choice for incorporating mechanical components into various robotic projects, mechatronics systems, and design hobbies.

These models find extensive use in a variety of products and applications where precise control of shaft position is crucial. They are commonly employed in laser cutters, CNC machines, 3D printers for prototyping, and linear motion systems, among others. actuators, etc.

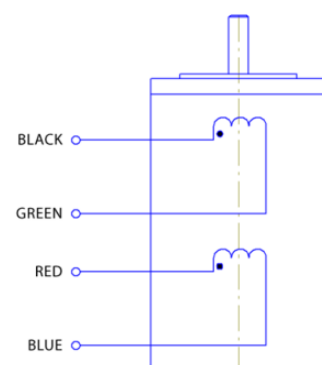
## Technical parameters

Holding Torque	Step angle	Step angle accuracy	Phase current	Phase resistance	Phase inductance	Number of phases / leads	Rotor inertia	Weight
18,9 kg*cm	1,8 deg	±5%	2,8 A	1,13 Ohm	3,6 mH	2 / 4	480 g*cm <sup>2</sup>	1 Kg

## Dimensions



## Wiring diagram



**Address:** Tallinn Science Park Tehnopol,  
Akadeemia tee 21/6, 12618, Tallinn, Estonia  
**Phone:** +372 6559914  
**E-mail:** sale@smd.ee



**SMART MOTOR DEVICES**  
DRIVERS AND CONTROLLERS FOR ELECTROMOTORS