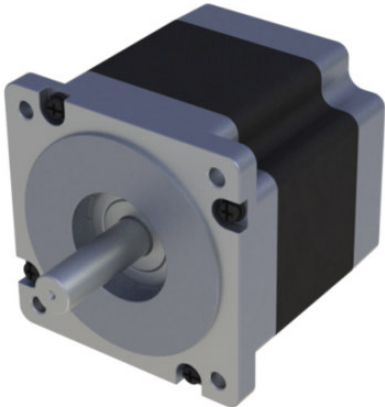


FL86STH80-4208A

STEPPER MOTOR

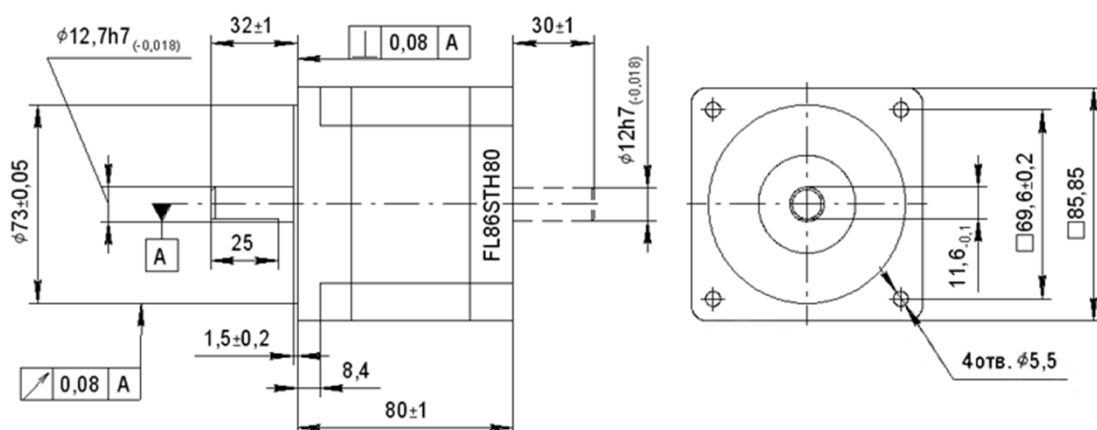


The stepper motors FL86STH80-4208A, which fall under the Nema34 size category, are recognized for their capacity to deliver high torque. They are typically employed in medium to large-sized industrial equipment and serve as actuators for linear motion systems and CNC machines. These motor designs find extensive application in industrial automation equipment, such as assembly and packaging lines, as well as in the field of 3D printing.

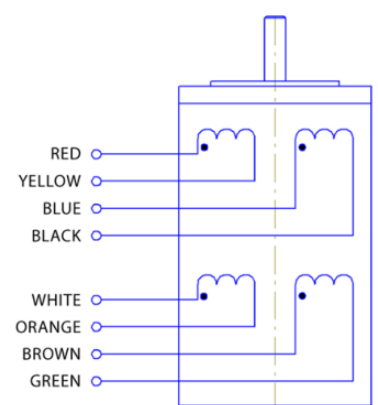
Technical parameters

Holding Torque	Step angle	Step angle accuracy	Phase current	Phase resistance	Phase inductance	Number of phases / leads	Rotor inertia	Weight
46 kg*cm	1,8 deg	±5%	4,2 A	0,75 Ohm	3,4 mH	2 / 4	1400 g*cm ²	2,3 Kg

Dimensions



Wiring diagram



Address: Tallinn Science Park Tehnopol,
Akadeemia tee 21/6, 12618, Tallinn, Estonia
Phone: +372 6559914
E-mail: sale@smd.ee



SMART MOTOR DEVICES
DRIVERS AND CONTROLLERS FOR ELECTROMOTORS