

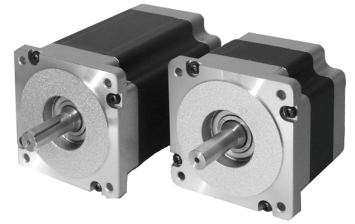
SMART MOTOR DEVICES

www.stepmotor.biz

Stepper motors

Besides step motor drives, drivers and controllers we sell hybrid 2-phase and 4-phase stepper motors.

Stepper motors provide precise economically effective low cost motion. The main resolution of step motors 200 steps per revolution can be increased in few times by step dividing (microstepping mode) of a controller or a driver. The operation of stepper motors is easy to control and doesn't require feedback and expensive complicated devices.



Stepper motor	Holding torque, kgf*cm (N*m)	Max. current per phase, Amp	Resistance per phase, Ohm	Inductance per phase, mH	Rotor inertia, g*cm ²	Dimensions, mm	Wiring
SM2832	0.4 (0.04)	0.95	2.8	1	9	28x28x32	1
SM4247	4.4 (0.43)	1.68	1.65	2.8	68	42x42x48	1, 2
SM5776	18.9 (1.85)	2.8	1.13	3.6	480	56x56x76	1, 2
SM8680	46 (4.51)	4.2	0.75	3.4	1400	86x86x80	3, 4
SM86118	87 (8.53)	6.0	0.6	6.5	2700	86x86x118	3, 4
SM110201	280 (27.45)	8.0	0.67	12	16200	110x110x201	2

SM2832 is one of the smallest hybrid stepper motors. Although the size is small, the output torque is high enough for the range of applications, such as disk drives, fax machines, printing devices, copying machines, appliances. It can be used also in fine mechanics devices, optical devices, instrumentation, sorting automatic machines, automatic feeders, microsized dosing units and many others. The stepper motor SM2832 has low rotor inertia, which result to excellent dynamics and high maximum rotation speed.

SM4247 is a compact hybrid stepper motor. The optimal balance of size and torque make usage of this step motor the best solution for micromanipulators, positioners, grout feeders, semi-automatic machines of multi parameter control, sampling equipment, automatic analyzers, mixers and devices for analysis of oil products.

SM5757 is the most popular stepper motor for all kinds' equipment. As an example these motors can be used in robots, inspection machines, machine vision systems, pressure control devices, mini sized CNC machines and positioning stages.

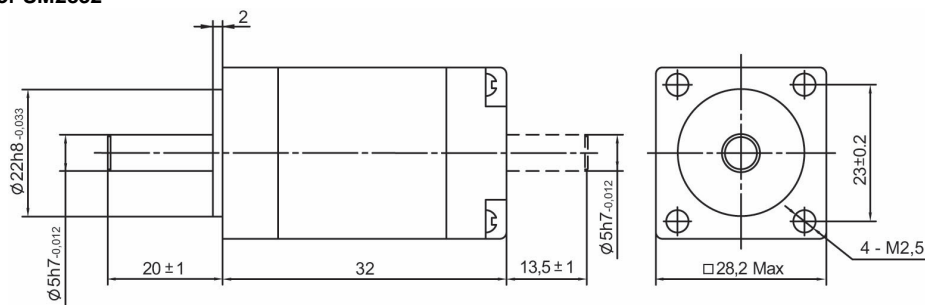
SM8680 and SM86118 are a prosperous solution for woodworking, plastic working, widely used with aluminium alloy materials. These stepper motors operate in cnc machines, electrical discharge machines, milling systems, grading machines. The stepper motors SM86 are applied in automatic labeling machines, label dispensers, automatic printers, laser cutting machines and so on and others. These motors are successful in robotic laser beam machines in automotive industry. SM86118 are good solution for automatic welders, drive executive mechanism of assembly lines and conveyors. This is just a short range of usage examples of the SM8680 and SM86118 stepper motors

SM110201 is a high torque stepper motor, it is the one of the most powerful in hybrid stepmotor range.

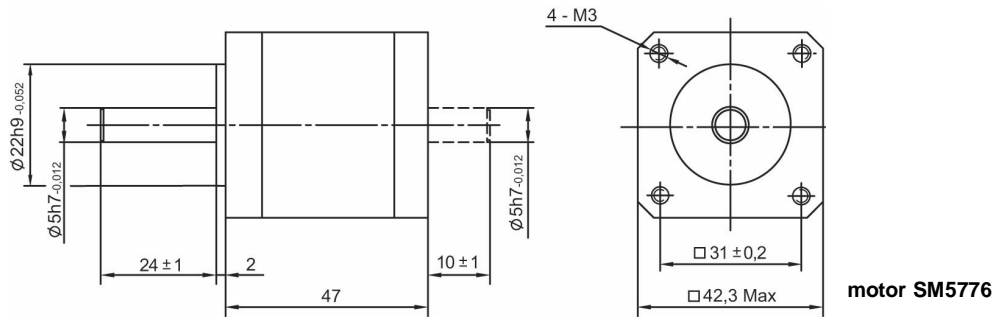
The motors are applied in turning lathes, milling and grinding machines, multi-axis boring cnc systems. SM110201 stepmotors operate in autofeed equipment, pressure control and flow control devices. These stepper motors are successfully used in automatic welders, in laser beam machines, in specific machine industry and in metal industry. The motors are applied as actuators for outdoor billboards as well.

Dimensions

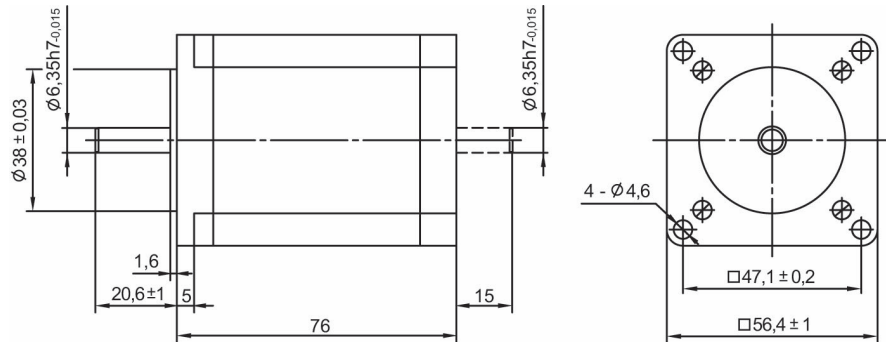
Dimensions of stepper motor SM2832



Dimensions of stepper motor SM4247



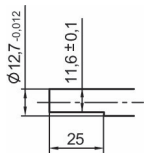
Dimensions of stepper



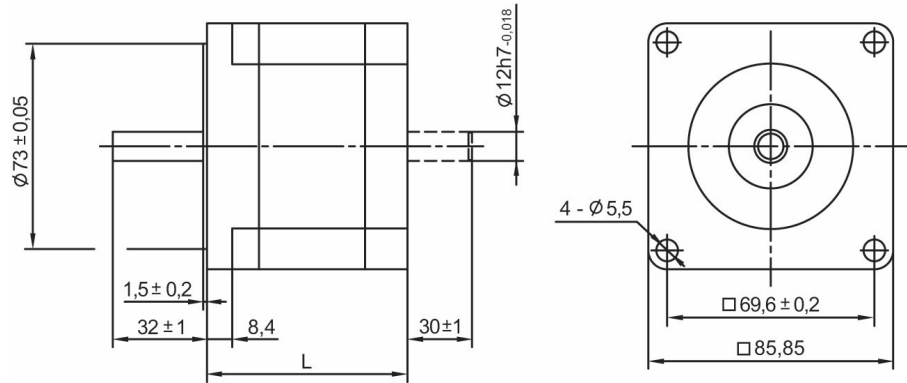
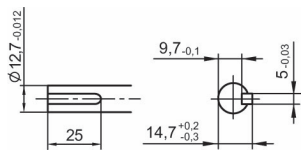
motor SM5776

Dimensions of stepper motor SM8680 and SM86118

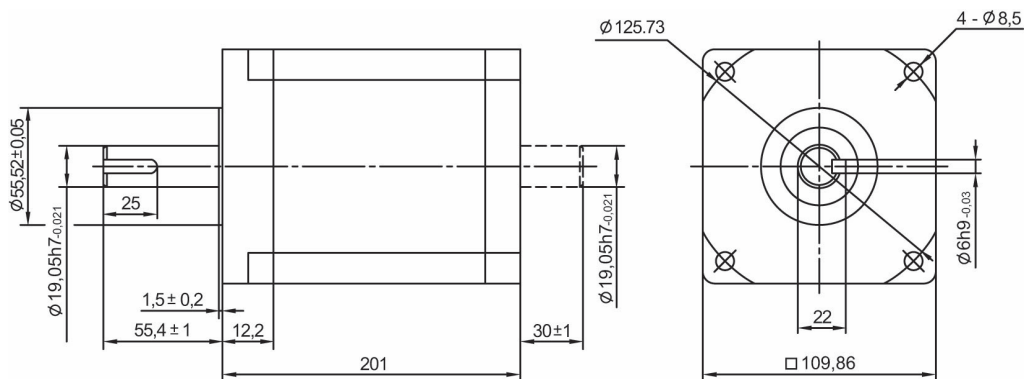
SM8680: L=80mm;



SM86118: L=118mm

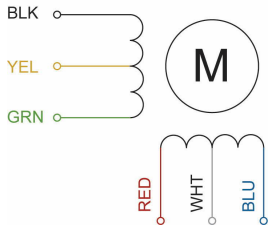


Dimensions of stepper motor SM110201



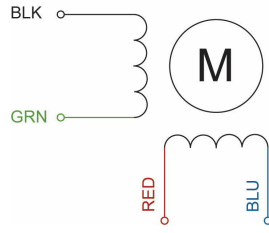
Wiring

6 LEADS

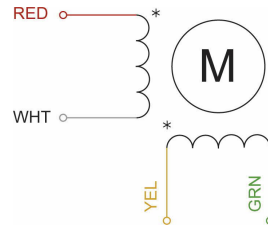


Scheme 1

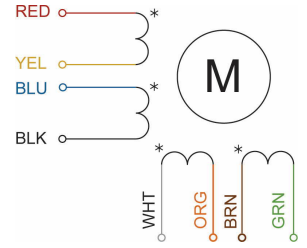
4 LEADS



Scheme 2



Scheme 3



Scheme 4