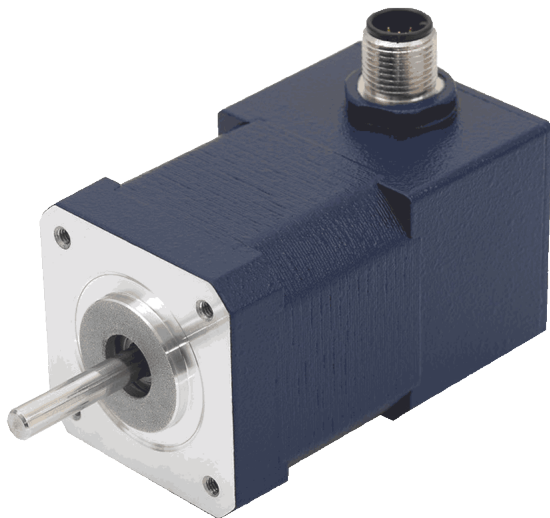


# AS4118L1804-E

## STEPPER MOTOR WITH IP65 WITH ENCODER



High-torque stepper motor with M12 connector with protection class IP65 (except shaft output) in size NEMA 17 (42 mm) and 1.8° step angle (full step). Identical flange size as the standard motor ST4118, therefore electrically and mechanically interchangeable.

Stepper motor AS4118L1804-E is designed for harsh operating environments and have high electromagnetic compatibility (EMC). It is supplied with integrated incremental encoder 500 CPR. Pre-assembled cables permit quick and error-free wiring and commissioning.

An extensive range of customized shaft and cable versions as well as custom-made products are available upon a request.

### Technical parameters

Flange	42 mm	IP-protection motor	IP65
Size	NEMA 17	Encoder type	incremental
Holding torque	50 Ncm	Operating voltage	5 V
Current per phase	1.8 A	Rotor inertia	82 gcm <sup>2</sup>
Length	70.4 mm	Encoder	YES
Resistance per phase	1.75 Ohm	Encoder resolution	500 CPR
Brake	NO	Weight	0.34 kg

### Dimensions

